



KAPA HTP Library Preparation Kit

Illumina® Platforms

KR0426 – v6.17

This Technical Data Sheet provides product information and a detailed protocol for the KAPA HTP Library Preparation Kit.

This document applies to the KAPA HTP Library Preparation Kit (07961901001), and the KAPA HTP Library Preparation Kit for PCR-free workflows (07961910001).

Contents

| | |
|--|----|
| Product Description | 2 |
| Product Applications | 2 |
| Product Specifications | 2 |
| Shipping and Storage | 2 |
| Handling | 2 |
| Quality Control | 2 |
| Important Parameters | 3 |
| Automated Library Construction | 3 |
| Safe Stopping Points | 3 |
| Input DNA and Fragmentation | 4 |
| End Repair and A-tailing Cleanup | 4 |
| Adapter Design and Concentration | 5 |
| Post-ligation Processing | 5 |
| Reaction Cleanups | 5 |
| Size Selection | 6 |
| Library Amplification | 6 |
| Evaluating the Success of Library Construction | 8 |
| Process Workflow | 9 |
| Library Construction Protocol | 10 |
| Appendix: Library Construction Guidelines for the Roche SeqCap EZ Target Capture System | 17 |
| Restrictions and Liabilities | 20 |
| Note to Purchaser: Limited Product Warranty | 20 |
| Note to Purchaser: Limited License | 20 |

Kapa/Roche Kit Codes and Components

| | | |
|-------------------------------|---|--------|
| KK8234 07961901001 | End Repair Buffer (10X) | 1.2 mL |
| | End Repair Enzyme Mix | 600 µL |
| | A-Tailing Buffer (10X) | 650 µL |
| | A-Tailing Enzyme | 360 µL |
| KK8235* 07961910001 | Ligation Buffer (5X) | 1.3 mL |
| | DNA Ligase | 600 µL |
| | PEG/NaCl Solution | 40 mL |
| | KAPA HiFi HotStart ReadyMix (2X)* | 3.0 mL |
| 96 libraries | Library Amplification Primer Mix (10X)* | 600 µL |

*KK8235 is available for PCR-free workflows and does not contain library amplification reagents.

Quick Notes

- This kit is designed for the construction of DNA libraries from a wide range of DNA samples and inputs (10 ng – 5 µg) for Illumina sequencing.
- The optimized “with-bead” protocol improves the efficiency of library construction and facilitates automation. Generous reagent excesses are supplied to accommodate automated liquid handling.
- Kits contain all the reagents for library construction and high-efficiency, low-bias library amplification, except for adapters and beads. PEG/NaCl Solution required for “with-bead” reaction cleanups is provided. KAPA Pure Beads and KAPA Adapters are sold separately. Kits without an amplification module are available for PCR-free workflows.
- The **Process Workflow** provides an overview of the library construction process and options for size selection. The protocol provided in this document is a generic prototype, and may require additional optimization.
- The **KAPA NGS Library Preparation Technical Guide** (available at www.sequencing.roche.com) contains more detailed information about library construction parameters, and may facilitate protocol development and optimization.

Product Description

KAPA HTP Library Preparation Kit is designed for high-throughput library construction for Illumina sequencing, starting from fragmented, double-stranded DNA (dsDNA). The kit contains all of the enzymes and reaction buffers required for the following steps of library construction:

1. end repair, to produce blunt-ended, 5'-phosphorylated dsDNA fragments;
2. A-tailing, during which dAMP is added to the 3'-ends of blunt-ended dsDNA library fragments;
3. adapter ligation, during which dsDNA adapters with 3'-dTTP overhangs are ligated to 3'-A-tailed library fragments; and
4. library amplification (optional), which employs high-fidelity, low-bias PCR to amplify library fragments carrying appropriate adapter sequences on both ends.

Efficient, cost-effective reaction cleanups and higher library yields are achieved through implementation of the “with-bead” strategy developed at The Broad Institute of MIT and Harvard and Foundation Medicine.¹ The kit includes PEG/NaCl Solution for this purpose. Adapters and beads required for cleanups after end repair and library amplification are not included. However, KAPA Pure Beads and KAPA Adapters are sold separately.

In order to maximize sequence coverage uniformity, it is critical to minimize library amplification bias. KAPA HiFi DNA Polymerase is designed for low-bias, high-fidelity PCR, and is the reagent of choice for NGS library amplification.^{2,3,4,5} KAPA HTP Library Preparation Kits include KAPA HiFi HotStart ReadyMix (2X), a ready-to-use PCR mix comprising all the components for library amplification—except primers and template. Kits also include Library Amplification Primer Mix (10X), designed for the high-efficiency amplification of Illumina libraries flanked by adapters containing the P5 and P7 flow cell sequences. A kit without the amplification module (KK8235) is available for PCR-free workflows. They may also be combined with KAPA HiFi Real-time Library Amplification Kits, or with KAPA HiFi HotStart Uracil+ ReadyMix Kits for the amplification of bisulfite-converted libraries.

1. Fisher, S., et al., *Genome Biology* 12, R1 (2011).
2. Oyola, S.O., et al., *BMC Genomics* 13, 1 (2012).
3. Quail, M.A., et al., *Nature Methods* 9, 10 (2012).
4. Quail, M.A., et al., *BMC Genomics* 13, 341 (2012).
5. Ross, M.G., et al., *Genome Biology* 14, R51 (2013).

Product Applications

KAPA HTP Library Preparation Kits are ideally suited for high-throughput NGS library construction workflows that require end repair, A-tailing, adapter ligation and library amplification (optional). The kit is designed for library construction from a wide range of sample types and inputs (10 ng – 5 µg). For small genomes, cell-free/circulating tumor DNA and lower complexity samples such as ChIP DNA, amplicons or cDNA (for RNA-seq), successful

library construction has been achieved from lower inputs (~100 pg or more).

The protocol is automation friendly and may be incorporated into workflows for a wide range of NGS applications, including:

- whole-genome, shotgun sequencing
- whole exome or targeted sequencing, using Roche SeqCap EZ, Agilent SureSelect, Illumina TruSeq, IDT xGen Lockdown Probes, or other hybridization capture systems
- ChIP-seq
- RNA-seq (starting with cDNA)
- methyl-seq (in combination with the KAPA HiFi HotStart Uracil+ ReadyMix for library amplification).

Specific guidelines for the construction of libraries for target capture using the Roche SeqCap EZ system may be found in the **Appendix** (p 17).

Product Specifications

Shipping and Storage

The enzymes provided in this kit are temperature sensitive, and appropriate care should be taken during shipping and storage. KAPA HTP Library Preparation Kits are shipped on dry ice or ice packs, depending on the destination country. Upon receipt, immediately store enzymes and reaction buffers at -15°C to -25°C in a constant-temperature freezer. The PEG/NaCl Solution must be protected from light and stored at 2°C to 8°C for short-term use (≤2 months), or at -15°C to -25°C. When stored under these conditions and handled correctly, the kit components will retain full activity until the expiry date indicated on the kit label.

Handling

Always ensure that KAPA HTP Library Preparation Kit components have been fully thawed and thoroughly mixed before use. KAPA HiFi HotStart ReadyMix (2X) contains isostabilizers and may not freeze completely, even when stored at -15°C to -25°C. Nevertheless, always ensure that the ReadyMix is fully thawed and thoroughly mixed before use. PEG/NaCl Solution does not freeze at -15°C to -25°C, but should be equilibrated to room temperature and thoroughly mixed before use. Keep all enzyme components and master mixes on ice as long as possible during handling and preparation.

Quality Control

All kit components are subjected to stringent functional quality control, are free of detectable contaminating exo- and endonuclease activities, and meet strict requirements with respect to DNA contamination. Please contact Technical Support at sequencing.roche.com/support for more information.

Important Parameters

High-throughput library construction workflows must be tailored and optimized to accommodate specific experimental designs, sample characteristics, sequencing applications and equipment. The protocol provided in this document is generic, and reaction parameters may be adjusted as required to optimize performance, efficiency and cost-effectiveness.

In addition to the information in this section, please consult the **KAPA NGS Library Preparation Technical Guide** and/or contact Technical Support at sequencing.roche.com/support for further guidelines when designing or optimizing your library construction workflow.

Automated Library Construction

The library construction protocol described in this document is designed to be “automation friendly” and can be performed manually, or in a semi- or fully automated fashion using a suitable automated liquid handling platform. In addition to increased sample throughput, automation may be expected to provide additional advantages, such as improved reproducibility and process control. However, automation may result in slightly lower yields and/or different size distributions when compared with manual library construction performed by a skilled, experienced, and attentive technician. Most often, these discrepancies can be minimized through careful selection of hardware and plasticware, and optimization of liquid handling parameters.

Kapa Biosystems does not supply automated liquid handling equipment, but collaborates with automation solution providers and customers to develop and qualify optimized automated methods for liquid handling platforms routinely used in NGS library construction. Please contact Technical Support at sequencing.roche.com/support if you are interested in using the KAPA HTP Library Preparation Kit with your particular automated liquid handling system.

When attempting to develop an automated KAPA HTP Library Preparation method, please keep the following in mind:

- To enable a streamlined “with-bead” strategy, reaction components for enzymatic reactions must be combined into master mixes, rather than dispensed separately. Master mixes are stable for ≤24 hrs at room temperature and do not have to be actively cooled during automated library construction.
- Due to the strong 3'→5' exonuclease activity of KAPA HiFi HotStart DNA Polymerase, PCR master mixes with primers should preferably not be left on-deck for long periods of time, particularly if they are not actively cooled. Prepare library amplification master mixes freshly before use, or dispense primer mixes separately from the KAPA HiFi HotStart ReadyMix.

- Since an excess (5 – 20%) of each master mix will be required, generous reagent overages are included in the kit. The appropriate excess for other reagents (adapters, beads, PEG/NaCl Solution, 80% ethanol and elution buffer) varies from one liquid handling system to another.
- Incubations at temperatures above 50°C must be performed in a thermocycler with a heated lid.
- This protocol has been optimized for 96-well PCR plates with a maximum working volume of ~200 µL. Plates with larger working volumes or deep-well plates may be used to accommodate larger reaction volumes if needed.
- Always use plastics that are certified to be nuclease-free. Low DNA-binding plastics are recommended. When selecting the most appropriate plasticware for your workflow, consider compatibility with:
 - the plate gripper and other components of your liquid handling system;
 - the magnet used during bead manipulations; and
 - Peltier devices or thermocyclers used for reaction incubations and/or library amplification.
- Design automated methods in a manner that ensures the highest consistency across all 12 columns of 96-well working plates, and eliminates all possible sources of sample-to-sample and environmental contamination. Consider performing pre- and post-PCR steps on dedicated instruments, if available.

Safe Stopping Points

The library construction process, from end repair to final, amplified library, can be performed in 4 – 8 hrs—depending on experience, the number of samples being processed, and whether or not library amplification is performed. If necessary, the protocol may be safely paused after any of the bead cleanup steps, as outlined below:

- After **End Repair Cleanup** (step 3), resuspend the washed beads in 20 µL of A-Tailing Buffer (1X) (without enzyme), and store the reactions at 2°C to 8°C for ≤24 hrs.
- After **A-tailing Cleanup** (step 5), resuspend the washed beads in 20 µL of Ligation Buffer (1X) (without enzyme or adapter), and store the reactions at 2°C to 8°C for ≤24 hrs.
- After **1st Post-ligation Cleanup** (step 7), resuspend the washed beads in the appropriate volume of 10 mM Tris-HCl (pH 8.0 – 8.5) as outlined in step 7.14, and store the reactions at 2°C to 8°C for ≤24 hrs.

DNA solutions containing cleanup beads must not be frozen, and beads must not be stored dry, as this is likely to damage the beads and result in sample loss. To resume

the library construction process, centrifuge the reaction vessels briefly to recover any condensate, and add the remaining components required for the next enzymatic reaction in the protocol (see Tables 6B and 7B on p. 11). If the protocol was paused after **1st Post-ligation Cleanup** (step 7), continue directly with **2nd Post-ligation Cleanup** (step 8), **Double-sided Size Selection** (step 9), or size selection using an alternative method.

Purified, adapter-ligated library DNA may be stored at 2°C to 8°C for 1 – 2 weeks, or at -15°C to -25°C for ≤1 month before amplification, target capture and/or sequencing. Library amplification products may be stored in a similar way, but the post-amplification cleanup should be performed as soon as possible. To avoid degradation, always store DNA in a buffered solution (10 mM Tris-HCl, pH 8.0 – 8.5) when possible, and minimize the number of freeze-thaw cycles.

Input DNA and Fragmentation

- This protocol is suitable for library construction from 10 ng – 5 µg of appropriately fragmented, double-stranded DNA. However, libraries can be prepared from lower input amounts if the sample copy number is sufficient to ensure the requisite coverage and complexity in the final library. Please refer to Table 1 for recommended inputs of different types of DNA for different sequencing applications.
- “Input” typically refers to the input into the end repair reaction. If DNA was quantified before fragmentation and/or fragmented DNA was subjected to cleanup or size selection prior to end repair, the actual input into library construction may be significantly lower. This should be taken into account when evaluating the efficiency of the process and/or during optimization of library amplification cycle number.
- The proportion of input DNA that is successfully converted to adapter-ligated molecules decreases as input is reduced. When starting library construction (end repair) with >100 ng fragmented DNA, 15 – 40% of input DNA is typically converted to adapter-ligated molecules, whereas conversion rates range between 0.5% and 15% for libraries constructed from 100 pg – 100 ng DNA. These figures apply to high-quality DNA and may be significantly lower for DNA of lower quality, e.g., FFPE samples. Workflows that contain additional bead-based cleanups or size selection prior to library amplification are likely to result in a lower yield of adapter-ligated molecules.
- DNA preparations containing high concentrations of EDTA, other chelating agents, or salts may inhibit the end repair reaction. If fragmented DNA is not subjected to a bead-based cleanup or size selected prior to end repair, DNA should be fragmented in 10 mM Tris-HCl (pH 8.0 – 8.5) + 0.1 mM EDTA. Fragmentation in water is not recommended. For DNA cleanup protocols, please refer to the **KAPA Pure Beads Technical Data Sheet**.
- The KAPA HTP Library Preparation Kit is compatible

with all mechanical and enzymatic fragmentation methods that are commonly used in NGS library construction workflows, except for tagmentation. Please refer to fragmentation guidelines provided by the manufacturer of your fragmentation equipment or reagent of choice. The KAPA Frag Kit for Enzymatic Fragmentation is highly recommended, particularly if you prefer not to use mechanical shearing or do not have access to specialized equipment. Please refer to the **KAPA Frag Technical Data Sheet** for a detailed protocol and information related to enzymatic fragmentation reaction parameters.

- In some circumstances it may be convenient to fragment input DNA in End Repair Buffer (1X), in which case the end repair reaction setup should be adjusted accordingly. Please contact Technical Support at sequencing.roche.com/support for more information.

Table 1. Recommended inputs into library construction

| Application | Sample type | Recommended input |
|-------------------------------------|---------------------------------|--------------------------------------|
| WGS | Complex gDNA (high quality) | 50 ng – 5 µg |
| Target capture (WES, custom panels) | Complex gDNA (high quality) | 10 ng – 5 µg |
| WGS, target capture | FFPE DNA | ≥100 ng (quality dependent) |
| WGS, target capture | Cell-free/circulating tumor DNA | ≥1 ng |
| WGS | Microbial DNA | 1 ng – 1 µg |
| WGS (PCR-free) | High-quality DNA | ≥100 ng (no SS)* ≥500 ng (w/ SS)* |
| ChIP-seq | ChIP DNA | ≥100 pg |
| Targeted sequencing | Amplicons | ≥100 pg |
| RNA-seq | cDNA | ≥10 ng |

*SS = size selection; results in the loss of 60 – 95% of DNA, irrespective of whether a bead- or gel-based technique is used.

End Repair and A-tailing Cleanup

- This protocol provides for 1.7X – 1.8X cleanups after end repair and A-tailing. This ratio of PEG/NaCl Solution-to-sample volume will retain DNA fragments longer than ~75 bp. If you wish to retain very small DNA fragments and/or improve recovery, the PEG/NaCl Solution-to-sample ratio can be increased to 2X – 3X for all cleanups prior to adapter ligation.
- When performing library construction in standard PCR plates, tubes or strip tubes, a 3X cleanup after end repair is not possible, as the maximum working volume per well is usually ~200 µL. To achieve a 3X cleanup after end repair, libraries must be prepared in 500 µL PCR tubes or 1.5 mL microtubes, or the end repair reaction must be scaled down. Please contact Technical Support at sequencing.roche.com/support for more information if your workflow or sample type requires modified bead-based cleanups.

Adapter Design and Concentration

- Kapa Adapters are recommended for use with the KAPA HTP Library Preparation Kit. However, the kit is also compatible with other full-length adapter designs wherein both the sequencing and cluster generation sequences are added during the ligation step, such as those routinely used in TruSeq (Illumina), SeqCap EZ (Roche) and SureSelect XT2 (Agilent) kits, and other similar library construction workflows. Custom adapters that are of similar design and are compatible with “TA-ligation” of dsDNA may also be used remembering that this may impact library construction efficiency. For assistance with adapter compatibility and ordering, please contact Technical Support at sequencing.roche.com/support.
- Adapter concentration affects ligation efficiency, as well as adapter and adapter-dimer carry-over during post-ligation cleanups. The optimal adapter concentration for your workflow represents a compromise between the above factors and cost.
- Ligation efficiency is robust for adapter:insert molar ratios ranging from 10:1 to 50:1, making it unnecessary to adjust adapter stock concentrations to accommodate moderate variations in DNA input or fragment length. As a general guideline, an adapter:insert molar ratio of ~10:1 is recommended for inputs ≥ 100 ng. This translates to different final adapter concentrations for libraries with different size distributions (see Table 2 below).
- An adapter:insert molar ratio $>10:1$ may be beneficial for low-input applications and challenging samples such as FFPE, cell-free/circulating tumor, and ChIP DNA. Adapter:insert molar ratios up to ~100:1 may be evaluated, but the top end of this range could result in unacceptable levels of adapter-dimer.
- Adapter quality has an impact on the effective concentration of adapter available for ligation. Always source the highest quality adapters from a reliable supplier, dilute and store adapters in a buffered solution with the requisite ionic strength, and avoid excessive freezing and thawing of adapter stock solutions.
- To accommodate different adapter concentrations within a batch of samples processed together, it is best

to vary the concentrations of adapter stock solutions, and dispense a fixed volume (5 μ L) of each adapter. The alternative (using a single stock solution, and dispensing variable volumes of adapter into ligation reactions) is not recommended, and not compatible with higher throughput or automated workflows.

Post-ligation Processing

- It is important to remove unligated adapter and/or adapter-dimer molecules from the library prior to library amplification or cluster generation.
- While a single bead-based cleanup removes most unligated adapter and adapter-dimer, a second bead-based cleanup is recommended to fully eliminate adapter species from the library. The amount of adapter and adapter-dimer carried through the first cleanup is dependent on the adapter concentration in the ligation reaction.
- If no post-ligation size selection is carried out, two consecutive 1X bead-based cleanups are recommended after ligation.
- The volume in which washed beads are resuspended after the post-ligation cleanup(s) should be adjusted to suit your chosen workflow:
 - If proceeding directly to library amplification, determine an appropriate final volume in which to elute the library DNA, keeping in mind that you may wish to divert and/or reserve some of this library material for archiving and/or QC purposes. Since a 50 μ L library amplification reaction can accommodate 20 – 24 μ L template DNA, an elution volume of ~25 μ L is recommended.
 - If proceeding with size selection, elute the library DNA in a volume appropriate for the size selection method of choice. For the double-sided size selection procedure described in the **Library Construction Protocol** (step 9), beads must be resuspended in 100 μ L of elution buffer.

Reaction Cleanups

- This protocol has been validated for use with either KAPA Pure Beads or Agencourt AMPure XP (Beckman Coulter). Solutions and conditions for DNA binding and

Table 2. Recommended adapter concentrations

| Insert DNA per 70 μ L end repair reaction | Recommended adapter concentration for DNA sheared to an average size of: | | | | | |
|---|--|-----------|------------|-----------|-------------|-------------|
| | 175 bp | | 350 bp | | 500 bp | |
| | Stock | Final | Stock | Final | Stock | Final |
| 3 – 5 μ g | 60 μ M | 6 μ M | 30 μ M | 3 μ M | 21 μ M | 2.1 μ M |
| 1 μ g | 20 μ M | 2 μ M | 10 μ M | 1 μ M | 7 μ M | 700 nM |
| 500 ng | 10 μ M | 1 μ M | 5 μ M | 500 nM | 3.5 μ M | 350 nM |
| 100 ng | 2 μ M | 200 nM | 1 μ M | 100 nM | 700 nM | 70 nM |
| 10 ng | 200 nM | 20 nM | 100 nM | 10 nM | 70 nM | 7 nM |
| 1 ng | 20 nM | 2 nM | 10 nM | 1 nM | 7 nM | 700 pM |

size selection may differ if other beads are used.

- Cleanups should be performed in a timely manner to ensure that enzymatic reactions do not proceed beyond optimal incubation times.
- Observe all the storage and handling recommendations for KAPA Pure Beads or AMPure XP. Equilibration to room temperature is essential to achieve specified size distribution and yield of libraries.
- Beads will settle gradually; always ensure they are fully resuspended before use.
- **To ensure optimal DNA recovery, it is critical that the DNA and the KAPA Pure Beads are thoroughly mixed** (by vortexing or extensive up and down pipetting) before the DNA binding incubation.
- Bead incubation times are guidelines only, and may be modified/optimized based on current protocols, previous experience, specific equipment and samples in order to maximize library construction efficiency and throughput.
- The time required to completely capture beads varies according to the reaction vessel and magnet used. It is important to not discard or transfer any beads with the removal or transfer of supernatant. Capture times should be optimized accordingly.
- The volumes of 80% ethanol used for bead washes may be adjusted to accommodate smaller reaction vessels and/or limited pipetting capacity, but it is important that the beads are entirely submerged during the wash steps. **Always use freshly prepared 80% ethanol.**
- It is important to remove all ethanol before proceeding with subsequent reactions. However, over-drying of beads may make them difficult to resuspend, resulting in a dramatic loss of DNA. With optimized aspiration of ethanol, drying of beads for 3–5 min at room temperature should be sufficient. **Drying of beads at 37°C is not recommended.**
- Where appropriate, DNA should be eluted from beads in elution buffer (10 mM Tris-HCl, pH 8.0–8.5). Elution of DNA in PCR-grade water is not recommended, as DNA is unstable in unbuffered solutions. However, libraries constructed for target capture must be eluted and stored in PCR-grade water to facilitate drying of DNA prior to probe hybridization.

Purified DNA in elution buffer should be stable at 2°C to 8°C for 1–2 weeks, or for long-term storage at -15°C to -25°C. The long-term stability of library DNA at -15°C to -25°C depends on a number of factors, including library concentration. Always use low DNA-binding tubes for long-term storage, and avoid excessive freezing and thawing.

Size Selection

- Size selection requirements vary widely for different sequencing applications. If required, any commonly used bead- or gel-based size selection technique may

be integrated into the KAPA HTP Library Preparation Kit Workflow.

- Size selection may be carried out at different points in the overall workflow, for example:
 - prior to end repair of fragmented DNA;
 - before library amplification—as outlined in **Library Construction Protocol** (p. 10); or
 - after library amplification.
- The double-sided size selection procedure described in the **Library Construction Protocol** (step 9) is designed for selection of adapter-ligated fragments approximately 250–450 bp in length. Please consult the **KAPA NGS Library Preparation Technical Guide** or contact Technical Support at sequencing.roche.com/support if you wish to select a different range of fragment lengths.
- Size selection inevitably leads to a loss of sample material. These losses can be dramatic (60–95%), and may significantly increase the number of amplification cycles required to generate sufficient material for the next step in the process (capture or sequencing). The potential advantages of one or more size selection steps in a library construction workflow should be weighed against the potential loss of library complexity, especially when input DNA is limited. A well-optimized fragmentation protocol, especially for shorter insert libraries and/or read lengths, may eliminate the need for size selection, thereby simplifying the library construction process and limiting sample losses.
- Ligation Buffer (5X) contains a high concentration of PEG 6000, which will interfere with efficient double-sided size selection and can affect the efficiency of other size selection techniques if not removed. If size-selection is performed after ligation, it is important to perform at least one 1X bead-based cleanup prior to performing bead- or electrophoresis-based size selection.
- Over-amplification of libraries often results in the observation of secondary, higher molecular weight peaks when amplified libraries are analyzed electrophoretically. These higher molecular weight peaks are artifacts of the analysis, and typically contain authentic library molecules of the appropriate length. To eliminate these artifacts, optimization of library amplification reaction parameters (cycle number and/or primer concentration), rather than post-amplification size selection, is recommended. Please refer to the next subsection for more information.

Library Amplification

- KAPA HiFi HotStart, the enzyme provided in the KAPA HiFi HotStart ReadyMix, is an antibody-based hot start formulation of KAPA HiFi DNA Polymerase—a novel B-family DNA polymerase engineered for increased processivity and high fidelity. KAPA HiFi HotStart has 5'→3' polymerase and 3'→5' exonuclease (proofreading) activity, but no 5'→3' exonuclease activity. The strong 3'→5' exonuclease activity results in superior accuracy

during DNA amplification. The error rate of KAPA HiFi HotStart is 2.8×10^{-7} errors/base, equivalent to 1 error in 3.5×10^6 nucleotides incorporated.

- Library Amplification Primer Mix (10X) is designed to eliminate or delay primer depletion during library amplification reactions performed with KAPA HiFi HotStart ReadyMix. The primer mix is suitable for the amplification of all Illumina libraries flanked by the P5 and P7 flow cell sequences. Primers are supplied at a 10X concentration of 20 μ M each, and have been formulated as described below. User-supplied primer mixes may be used in combination with incomplete or custom adapters. Please contact Technical Support at sequencing.roche.com/support for guidelines on the formulation of user-supplied library amplification primers.
- To achieve optimal amplification efficiency and avoid primer depletion, it is critical to use an optimal concentration of high quality primers. Primers should be used at a final concentration of 0.5 – 2 μ M each. For libraries constructed from ≥ 100 ng input DNA, the highest final concentration (2 μ M of each primer) is recommended.
- Library amplification primers should be HPLC-purified and modified to include a phosphorothioate bond at the 3'-terminal of each primer (to prevent degradation by the strong proofreading activity of KAPA HiFi HotStart). Always store and dilute primers in a buffered solution (e.g., 10 mM Tris-HCl, pH 8.0 – 8.5), and limit the number of freeze-thaw cycles. To achieve the latter, store primers at 2°C to 8°C for short-term use, or as single-use aliquots at -15°C to -25°C.
- In library amplification reactions (set up according to the recommended protocol), primers are typically depleted before dNTPs. When DNA synthesis can no longer take place due to substrate depletion, subsequent rounds of DNA denaturation and annealing result in the separation of complementary DNA strands, followed by imperfect annealing to non-complementary partners. This presumably results in the formation of so-called “daisy-chains” or “tangled knots”, comprising large assemblies of improperly annealed, partially double-stranded, heteroduplex DNA. These species migrate slower and are observed as secondary, higher molecular weight peaks during the electrophoretic analysis of amplified libraries. However, they typically comprise library molecules of the desired length, which are individualized during denaturation prior to cluster amplification or probe hybridization. Since these heteroduplexes contain significant portions of single-stranded DNA, over-amplification leads to the under-quantification of library molecules with assays employing dsDNA-binding dyes. qPCR-based library quantification methods, such as the KAPA Library Quantification assay, quantify DNA by denaturation and amplification, thereby providing an accurate measure of the amount of adapter-ligated molecules in a library—even if the library was over-amplified.
- Please refer to the KAPA NGS Library Preparation

Technical Guide for a more detailed discussion of factors that can affect the efficiency of library amplification and impact of over-amplification on library quantification.

- Excessive library amplification can result in other unwanted artifacts such as amplification bias, PCR duplicates, chimeric library inserts and nucleotide substitutions. The extent of library amplification should therefore be limited as much as possible, while ensuring that sufficient material is generated for QC and downstream processing (e.g., target capture or sequencing).
- If cycled to completion (**not recommended**), one 50 μ L library amplification PCR—performed as described in **Library Construction Protocol** (step 10)—can produce 8 – 10 μ g of amplified library. To minimize over-amplification and its associated, undesired artifacts, the number of amplification cycles should be tailored to produce the optimal amount of final library required for downstream processes. This is typically in the range of 250 ng – 1.5 μ g. Table 3 provides recommended cycle numbers for libraries prepared from high-quality input DNA, to obtain approximately 100 ng or 1 μ g of amplified library.

Table 3. Recommended cycle numbers to generate 100 ng or 1 μ g of amplified library from 1 ng – 1 μ g of input DNA

| Input DNA (into end repair) | Number of cycles required to generate | |
|--------------------------------|---------------------------------------|-------------------|
| | 100 ng library | 1 μ g library |
| 1 μ g | 0 – 1* | 2 – 3 |
| 500 ng | 0 – 1* | 3 – 4 |
| 250 ng | 1 – 3* | 4 – 6 |
| 100 ng | 3 – 4 | 6 – 8 |
| 50 ng | 4 – 5 | 8 – 9 |
| 25 ng | 5 – 7 | 9 – 11 |
| 10 ng | 8 – 10 | 11 – 13 |
| 5 ng | 9 – 11 | 13 – 15 |
| 2.5 ng | 11 – 13 | 15 – 17 |
| 1 ng | 14 – 16 | 18 – 20 |

*When using incomplete adapters, a minimum number of amplification cycles (1 – 3) may be required to complete adapter sequences for the next step in the process (target capture or sequencing), irrespective of whether a sufficient amount of library is available after ligation. The number of cycles needed depends on the specific adapter and amplification primer design.

- The quantification of adapter-ligated libraries (prior to library amplification) can greatly facilitate the optimization of library amplification parameters, particularly when a library construction workflow is first established. With the KAPA Library Quantification Kit, the amount of template DNA (adapter-ligated molecules) available for library amplification can be determined accurately. From there, the number of amplification cycles needed to achieve a specific yield of amplified library can be predicted theoretically. Please refer to Table 4 for the number of cycles recommended to obtain approximately 1 μ g of DNA from 0.5 – 500 ng of adapter-ligated DNA, or contact Technical Support at sequencing.roche.com/support for a calculator to assist with these calculations. Please

note the actual optimal number of amplification cycles may be 1 – 3 cycles higher or lower, depending on the sample type and size distribution of the input DNA.

- Depending on the amount of library material required for your application, it may be possible to omit library amplification. In such cases, it is important to ensure that your adapters are designed to support sample indexing (where required), cluster amplification and sequencing. Omitting library amplification streamlines the workflow and reduces overall library preparation time by about 1 hr. The high conversion efficiency achievable with the KAPA HTP Library Preparation Kit enables PCR-free workflows from as little as 100 ng of input DNA. The KAPA HTP Library Preparation Kit without amplification reagents (KK8235) is available for PCR-free workflows.

Table 4. Theoretical number of cycles required to obtain approximately 1 µg of amplified library DNA from 0.5 – 500 ng of adapter-ligated library DNA*

| Amount of adapter-ligated DNA in amplification reaction | Number of cycles required to generate 1 µg of library DNA |
|---|---|
| 500 ng | 1 – 2 |
| 100 ng | 3 – 4 |
| 50 ng | 5 – 6 |
| 10 ng | 7 – 8 |
| 5 ng | 8 – 9 |
| 1 ng | 11 – 12 |
| 500 pg | 12 – 13 |

*Guidelines are based on amplification with KAPA HiFi HotStart ReadyMix and the Library Amplification Primer Mix, and library quantification with the qPCR-based KAPA Library Quantification Kit.

Evaluating the Success of Library Construction

- Your specific library construction workflow should be tailored and optimized to yield a sufficient amount of adapter-ligated molecules of the desired size distribution for the next step in the process (e.g., target enrichment or sequencing), as well as for QC and archiving purposes.
- The size distribution of final libraries should be confirmed with an electrophoretic method. A LabChip GX, GXII, or GX Touch (PerkinElmer), Bioanalyzer or TapeStation (Agilent Technologies), Fragment Analyzer (Advanced Analytical) or similar instrument is recommended over conventional gels.
- Please note that libraries prepared with “forked” adapters in PCR-free workflows will appear to have a longer than expected mode fragment length, and/or may display a broad or bimodal size distribution when analyzed electrophoretically. The difference in overall appearance and fragment size distribution of an unamplified vs. the corresponding amplified library varies, and depends on the adapter design and electrophoretic system used. To accurately determine the size distribution of an unamplified library, an aliquot of the library may be subjected to a few cycles of amplification prior to electrophoretic analysis, to ensure that all adapter-ligated molecules adapters are fully double-stranded. Alternatively, size information

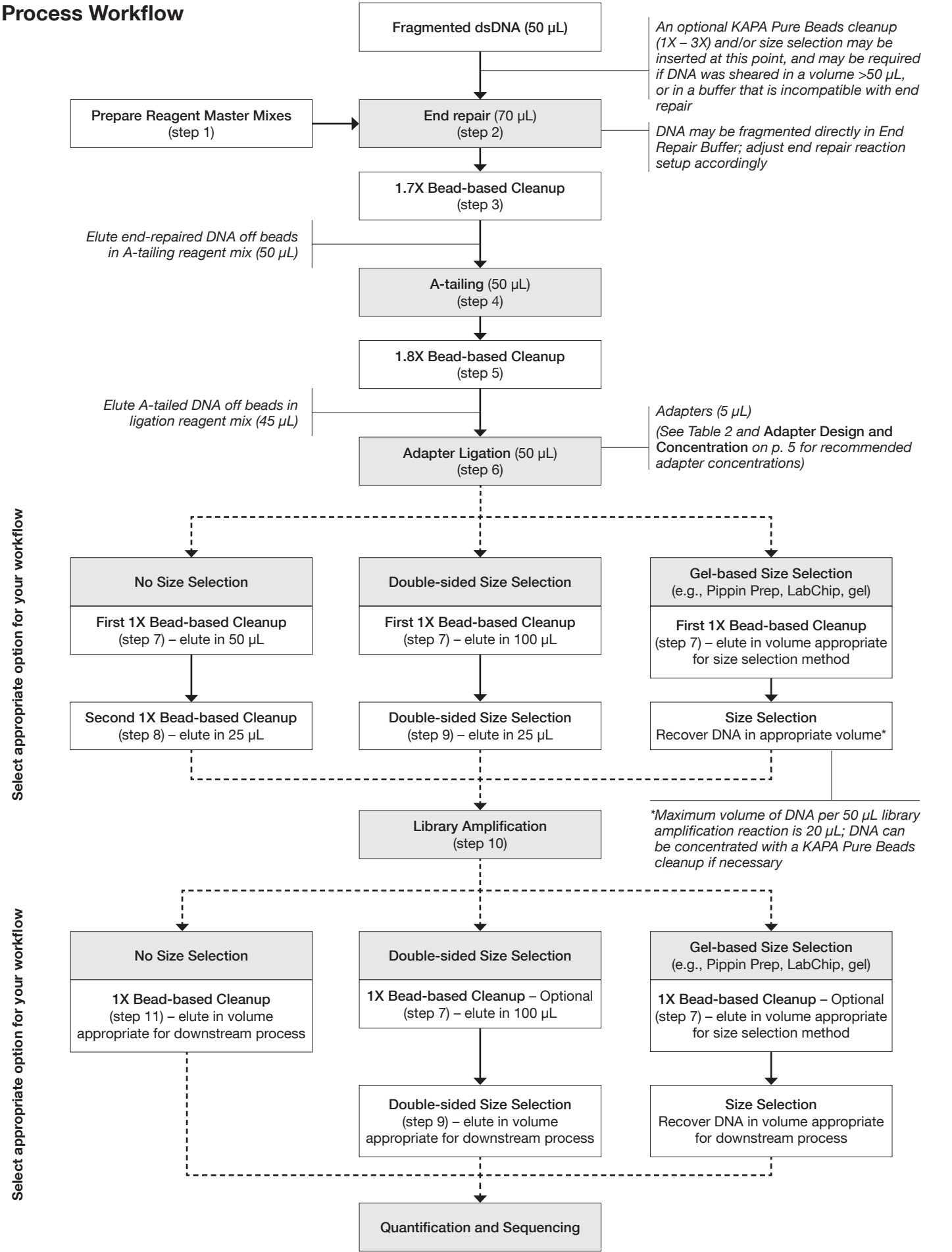
may be obtained by electrophoretic analysis of library quantification products generated with the KAPA Library Quantification Kit (see below).

- KAPA Library Quantification Kits for Illumina platforms are recommended for qPCR-based quantification of libraries. These kits employ primers based on the Illumina flow cell oligos, and can be used to quantify libraries that:
 - are ready for flow-cell amplification, and/or
 - were constructed with full-length adapters, once ligation has been completed, i.e., after the post-ligation cleanup, after the amplification cleanup, or before/after post-ligation or post-amplification size selection.

The KAPA Library Quantification Kit provides the only reliable means for quantifying libraries at different stages of the workflow, and libraries produced in PCR-free workflows, as:

- it only quantifies those molecules with two adapters in the correct orientation for cluster amplification and sequencing, and
 - measurements are not affected by library over-amplification—see **Important Parameters: Library Amplification** (p. 6).
 - Once a library construction workflow has been optimized, and consistently yields the desired amount of amplified library of the requisite size distribution, it is typically not necessary to perform in-process quality control. However, qPCR-based quantification of libraries after the post-ligation cleanups (prior to library amplification) can provide useful data for optimization or troubleshooting. Quantification at this stage allows you to assess the efficiency of:
 - the core library construction process (end repair, A-tailing and ligation), by determining the percentage of input DNA converted to adapter-ligated molecules.
 - library amplification with the selected number of cycles, based on the actual amount of template DNA used in the PCR.
- The availability of quantification data before and after library amplification allows the two major phases of the library construction process to be evaluated and optimized independently to achieve the desired yield of amplified library.
- If size selection is performed at any stage, qPCR quantification before and after size selection may also be helpful to define the relative benefit of size selection, and to determine the loss of material associated with the process.
 - Electrophoretic evaluation of libraries after the post-ligation cleanup/before library amplification may be informative, but remember that the apparent mode fragment length and size distribution will be inaccurate due to the retardation of non-complementary adapter regions, as outlined above.

Process Workflow



Library Construction Protocol

1. Reagent Preparation

For maximum stability and shelf-life, the enzyme preparations and concentrated reaction buffers for end repair, A-tailing and ligation are supplied separately in KAPA HTP Library Preparation Kits. For a streamlined “with-bead” protocol, a reagent master mix is prepared for each of these enzymatic steps, as outlined in Tables 5, 6, and 7. Additional reagents required for the KAPA HTP Library Preparation protocol are listed in Table 8.

Master mixes may be constituted with varying proportions of the total final water requirement. In the examples given in the tables below, all of the required water is included in each master mix, allowing the entire reaction mix to be dispensed in a single pipetting step (after cleanups, beads are resuspended directly in master mix for the next enzymatic step). This strategy may be modified for some automated liquid handling systems. For example, master mixes may be prepared with only a portion of the total volume of water, and the rest of the water added directly to the beads, or to beads resuspended in the reaction mix.

At safe stopping points, some or all of the water and/or reaction buffer may be added to the beads, for storage at 2°C to 8°C for ≤24 hrs. To resume library construction, prepare the master mix with the remaining volume of water (if applicable) and reaction buffer, and the required volume of enzyme. Recommendations on how to formulate master mixes after safe stopping points are provided in Tables 6B and 7B.

Master mixes for end repair, A-tailing and ligation may be prepared immediately before use, or stored for ≤1 week at 2°C to 8°C, or ≤3 months at -15°C to -25°C. Master mixes stored at -15°C to -25°C are stable through three freeze-thaw cycles.

The excess of each master mix or reagent required for processing a full batch of 96 samples is given in each of the tables. This is based on current experience with different liquid handling platforms, and varies as a result of the way reagents are utilized by different systems. When processing batches of less than 48 samples, the maximum excess may not be required.

Table 5. End repair

| Component: | 1 library | Excess required | 96 libraries <i>Inc. 20% excess</i> |
|-----------------------------|--------------|-----------------|--|
| End repair master mix: | | | |
| Water | 8 µL | 5 – 20% | 922 µL |
| End Repair Buffer (10X) | 7 µL | | 806 µL |
| End Repair Enzyme Mix | 5 µL | | 576 µL |
| Total master mix volume: | 20 µL | | 2304 µL |
| Final reaction composition: | Per reaction | | |
| Fragmented DNA | 50 µL | | |
| End repair master mix | 20 µL | | |
| Total reaction volume: | 70 µL | | |

Table 6A. A-tailing (uninterrupted protocol)

| Component: | 1 library | Excess required | 96 libraries <i>Inc. 20% excess</i> |
|------------------------------------|---------------------|-----------------|--|
| A-tailing master mix: | | | |
| Water | 42 µL | 5 – 20% | 4838 µL |
| A-Tailing Buffer (10X) | 5 µL | | 576 µL |
| A-Tailing Enzyme | 3 µL | | 346 µL |
| Total master mix volume: | 50 µL | | 5760 µL |
| Final reaction composition: | Per reaction | | |
| Beads with end-repaired DNA | | | |
| End repair master mix | 50 µL | | |
| Total reaction volume: | 50 µL | | |

Table 6B. A-tailing (with safe stopping point)

| Component: | 1 library | Excess required | 96 libraries <i>Inc. 20% excess</i> |
|---|--------------|-----------------|--|
| A-Tailing Buffer (1X) for safe stopping point: | | | |
| Water | 18 µL | | 2074 µL |
| A-Tailing Buffer (10X) | 2 µL | 5 – 20% | 230 µL |
| Total buffer volume: | 20 µL | | 2304 µL |
| Component: | 1 library | Excess required | 96 libraries <i>Inc. 20% excess</i> |
| A-tailing master mix after safe stopping point: | | | |
| Water | 24 µL | | 2765 µL |
| A-Tailing Buffer (10X) | 3 µL | 5 – 20% | 346 µL |
| A-Tailing Enzyme | 3 µL | | 346 µL |
| Total master mix volume: | 30 µL | | 3456 µL |
| Final A-tailing reaction composition (when protocol is resumed): | | | |
| | Per reaction | | |
| Beads with DNA in A-Tailing Buffer (1X) | 20 µL | | |
| A-tailing master mix | 30 µL | | |
| Total reaction volume: | 50 µL | | |

Table 7A. Adapter ligation (uninterrupted protocol)

| Component: | 1 library | Excess required | 96 libraries <i>Inc. 20% excess</i> |
|---|--------------|---------------------------|--|
| Ligation master mix: | | | |
| Water | 30 µL | | 3456 µL |
| Ligation Buffer (5X) | 10 µL | 5 – 20% | 1152 µL |
| DNA Ligase | 5 µL | | 576 µL |
| Total master mix volume: | 45 µL | | 5184 µL |
| Final reaction composition: | | | |
| | Per reaction | | |
| Beads with A-tailed DNA | | | |
| Adapter (<7 nM – 60 µM, as appropriate) | 5 µL | 50 – 100% for adapters | 7.5 – 10 µL adapter per library |
| Ligation master mix | 45 µL | | |
| Total reaction volume: | 50 µL | | |

Table 7B. Adapter ligation (with safe stopping point)

| Component: | 1 library | Excess required | 96 libraries <i>Inc. 20% excess</i> |
|--|--------------|---------------------------|--|
| Ligation Buffer (1X) for safe stopping point: | | | |
| Water | 16 µL | | 1843 µL |
| Ligation Buffer (5X) | 4 µL | 5 – 20% | 461 µL |
| Total buffer volume: | 20 µL | | 2304 µL |
| Component: | 1 library | Excess required | 96 libraries <i>Inc. 20% excess</i> |
| Ligation master mix after safe stopping point: | | | |
| Water | 14 µL | | 1613 µL |
| Ligation Buffer (5X) | 6 µL | 5 – 20% | 691 µL |
| DNA Ligase | 5 µL | | 576 µL |
| Total master mix volume: | 25 µL | | 2880 µL |
| Final ligation reaction composition (when protocol is resumed): | | | |
| | Per reaction | Excess required | 96 libraries <i>Inc. 20% excess</i> |
| Beads with DNA in Ligation Buffer (1X) | 20 µL | | |
| Ligation master mix | 25 µL | 50 – 100% for adapters | 7.5 – 10 µL adapter per library |
| Adapter (<7 nM – 60 µM, as appropriate) | 5 µL | | |
| Total reaction volume: | 50 µL | | |

Table 8. Volumes of additional reagents required

| Component: | 1 library | Excess required | 96 libraries <i>Inc. 20% excess</i> |
|---|----------------|-----------------|---|
| PEG/NaCl Solution (provided in kit): | | | |
| A-tailing cleanup | 90 µL | | |
| First post-ligation cleanup | 50 µL | 5 – 30% | 260 µL per library 25 mL for 96 libraries |
| Second post-ligation cleanup/double-sided size selection | 60 µL | | |
| Total volume required: | 200 µL | | |
| Component: | 1 library | Excess required | 96 libraries <i>Inc. 20% excess</i> |
| KAPA Pure Beads (sold separately): | | | |
| End repair cleanup | 120 µL | | |
| Double-sided size selection | 20 µL | 5 – 20% | 230 µL per library 22 mL for 96 libraries |
| Library amplification cleanup | 50 µL | | |
| Total volume required: | 190 µL | | |
| Component: | 1 library | Excess required | 96 libraries <i>Inc. 20% excess</i> |
| 80% ethanol (freshly prepared; not supplied)*: | | | |
| End repair cleanup | 400 µL | | |
| A-tailing cleanup | 400 µL | | |
| First post-ligation cleanup | 400 µL | 5 – 40% | 2.8 mL per library 270 mL for 96 libraries |
| Second post-ligation cleanup/double-sided size selection | 400 µL | | |
| Library amplification cleanup | 400 µL | | |
| Total volume required: | 2000 µL | | |
| Component: | 1 library | Excess required | 96 libraries <i>Inc. 20% excess</i> |
| Elution buffer (10 mM Tris-HCl, pH 8.0 – 8.5; not supplied): | | | |
| Second post-ligation cleanup/double-sided size selection | 125 µL | | |
| Library amplification cleanup | 25 µL | 10 – 30% | 195 µL per library 19 mL for 96 libraries |
| Total volume required: | 150 µL | | |

*When using automated liquid handling systems with filtered pipette tips, the volume of 80% ethanol used per wash is often reduced to 150 µL to accommodate the maximum working volume of the tip. In such cases, the total volume of 80% ethanol required for per sample is 1.5 mL, or 2.1 mL with the maximum excess, which equates to ~200 mL for 96 samples.

2. End Repair Reaction Setup

- 2.1 Assemble each end repair reaction in a tube or well of a PCR plate as follows:

| Component | Volume |
|---------------------------------|--------------|
| Fragmented, double-stranded DNA | 50 µL |
| End repair master mix (Table 5) | 20 µL |
| Total volume: | 70 µL |

- 2.2 Mix and incubate at 20°C for 30 min.
2.3 Proceed immediately to **End Repair Cleanup** (step 3).

3. End Repair Cleanup

- 3.1 In the same plate/tube(s), perform a 1.7X bead-based cleanup by combining the following:

| Component | Volume |
|-----------------------------|---------------|
| End repair reaction product | 70 µL |
| KAPA Pure Beads | 120 µL |
| Total volume: | 190 µL |

- 3.2 Mix thoroughly by vortexing and/or pipetting up and down multiple times.
3.3 Incubate the plate/tube(s) at room temperature for 5 – 15 min to bind DNA to the beads.
3.4 Place the plate/tube(s) on a magnet to capture the beads. Incubate until the liquid is clear.
3.5 Carefully remove and discard the supernatant.
3.6 Keeping the plate/tube(s) on the magnet, add 200 µL of 80% ethanol.
3.7 Incubate the plate/tube(s) on the magnet at room temperature for ≥30 sec.
3.8 Carefully remove and discard the ethanol.
3.9 Keeping the plate/tube(s) on the magnet, add 200 µL of 80% ethanol.
3.10 Incubate the plate/tube(s) on the magnet at room temperature for ≥30 sec.
3.11 Carefully remove and discard the ethanol. Try to remove all residual ethanol without disturbing the beads.

- 3.12 Dry the beads at room temperature for 3 – 5 min, or until all of the ethanol has evaporated. **Caution: over-drying the beads may result in reduced yield.**

- 3.13 Remove the plate/tube(s) from the magnet.

SAFE STOPPING POINT

Resuspend the beads in 20 µL of A-Tailing Buffer (1X) (Table 6B), cover the reaction and store at 2°C to 8°C for ≤24 hrs. Do not freeze the samples as this will damage the KAPA Pure Beads. When ready, proceed to **A-tailing After Safe Stopping Point** (step 4B).

4. A-tailing

A-tailing is performed either directly after **End Repair Cleanup**, or after **Safe Stopping Point**, where beads were resuspended in A-Tailing Buffer (1X) and stored at 2°C to 8°C for ≤24 hrs. Depending on your chosen workflow, proceed with either **A-tailing Immediately** (step 4A) or **A-tailing After Safe Stopping Point** (step 4B).

4A. A-tailing Immediately

- 4A.1 In the plate/tube(s) containing end repaired DNA and beads, assemble the A-tailing reaction as follows:

| Component | Volume |
|---------------------------------|--------------|
| Beads with DNA | – |
| A-tailing master mix (Table 6A) | 50 µL |
| Total volume: | 50 µL |

- 4A.2 Thoroughly resuspend the beads by vortexing and/or pipetting up and down multiple times.

- 4A.3 Incubate the plate/tube(s) at 30°C for 30 min.

- 4A.4 Proceed immediately to **A-tailing Cleanup** (step 5).

4B. A-tailing After Safe Stopping Point

- 4B.1 To resume library preparation, combine the following reagents to perform A-tailing:

| Component | Volume |
|---|--------------|
| Beads with DNA (in A-Tailing Buffer (1X)) | 20 µL |
| A-tailing master mix after Safe Stopping Point (Table 6B) | 30 µL |
| Total volume: | 50 µL |

- 4B.2 Thoroughly resuspend the beads by vortexing and/or pipetting up and down multiple times.

- 4B.3 Incubate the plate/tube(s) at 30°C for 30 min.

- 4B.4 Proceed immediately to **A-tailing Cleanup** (step 5).

5. A-tailing Cleanup

- 5.1 In the same plate/tube(s), perform a 1.8X bead-based cleanup by combining the following:

| Component | Volume |
|----------------------------|---------------|
| A-tailing reaction product | 50 µL |
| PEG/NaCl Solution | 90 µL |
| Total volume: | 140 µL |

- 5.2 Mix thoroughly by vortexing and/or pipetting up and down multiple times.

- 5.3 Incubate the plate/tube(s) at room temperature for 5 – 15 min to bind DNA to the beads.

- 5.4 Place the plate/tube(s) on a magnet to capture the beads. Incubate until the liquid is clear.

- 5.5 Carefully remove and discard the supernatant.

- 5.6 Keeping the plate/tube(s) on the magnet, add 200 µL of 80% ethanol.

- 5.7 Incubate the plate/tube(s) on the magnet at room temperature for ≥30 sec.

- 5.8 Carefully remove and discard the ethanol.

- 5.9 Keeping the plate/tube(s) on the magnet, add 200 µL of 80% ethanol.

- 5.10 Incubate the plate/tube(s) on the magnet at room temperature for ≥30 sec.

- 5.11 Carefully remove and discard the ethanol. Try to remove all residual ethanol without disturbing the beads.

- 5.12 Dry the beads at room temperature for 3 – 5 min, or until all of the ethanol has evaporated. **Caution: over-drying the beads may result in reduced yield.**

- 5.13 Remove the plate/tube(s) from the magnet.

SAFE STOPPING POINT

Resuspend the beads in 20 µL of Ligation Buffer (1X) (Table 7B), cover the reaction and store at 2°C to 8°C for ≤24 hrs. Do not freeze the samples as this will damage the KAPA Pure Beads. When ready, proceed to **Adapter Ligation After Safe Stopping Point** (step 6B).

6. Adapter Ligation

Adapter ligation is performed either directly after **A-tailing Cleanup**, or after the **Safe Stopping Point**, where beads were resuspended in Ligation Buffer (1X) and stored at 2°C to 8°C for ≤24 hrs. Depending on your chosen workflow, proceed with either **Adapter Ligation Immediately** (step 6A) or **Adapter Ligation After Safe Stopping Point** (step 6B).

6A. Adapter Ligation Immediately

- 6A.1 Dilute adapter stock to the appropriate concentration, as outlined in Table 2 (p. 5).
- 6A.2 In the plate/tube(s) containing A-tailed DNA and beads, assemble the adapter ligation reaction as follows:

| Component | Volume |
|-------------------------------------|--------------|
| Beads with DNA | – |
| Adapter (concentration as required) | 5 µL |
| Ligation master mix (Table 7A) | 45 µL |
| Total volume: | 50 µL |

- 6A.3 Thoroughly resuspend the beads by vortexing and/or pipetting up and down multiple times.
- 6A.4 Incubate at 20°C for 15 min.
- 6A.5 Proceed immediately to **1st Post-ligation Cleanup** (step 7).

6B. Adapter Ligation After Safe Stopping Point

- 6B.1 Dilute adapter stock to the appropriate concentration, as outlined in Table 2 (p. 5).
- 6B.2 To resume library preparation, combine the following reagents to perform adapter ligation:

| Component | Volume |
|--|--------------|
| Beads with DNA (in Ligation Buffer (1X)) | 20 µL |
| Adapter (concentration as required) | 5 µL |
| Ligation master mix (Table 7B) | 25 µL |
| Total volume: | 50 µL |

- 6B.3 Thoroughly resuspend the beads by vortexing and/or pipetting up and down multiple times.
- 6B.4 Incubate at 20°C for 15 min.
- 6B.5 Proceed immediately to **1st Post-ligation Cleanup** (step 7).

7. 1st Post-ligation Cleanup

Depending on your requirements and chosen workflow, one or two post-ligation cleanups should be performed. Consult **Important Parameters: Post-ligation Processing** (p. 5) and the **KAPA NGS Library Preparation Technical Guide** for more information.

- 7.1 In the same plate/tube(s), perform a 1X bead-based cleanup by combining the following:

| Component | Volume |
|-----------------------------------|---------------|
| Adapter ligation reaction product | 50 µL |
| PEG/NaCl Solution | 50 µL |
| Total volume: | 100 µL |

- 7.2 Mix thoroughly by vortexing and/or pipetting up and down multiple times.
- 7.3 Incubate the plate/tube(s) at room temperature for 5 – 15 min to bind DNA to the beads.
- 7.4 Place the plate/tube(s) on a magnet to capture the beads. Incubate until the liquid is clear.
- 7.5 Carefully remove and discard the supernatant.
- 7.6 Keeping the plate/tube(s) on the magnet, add 200 µL of 80% ethanol.
- 7.7 Incubate the plate/tube(s) on the magnet at room temperature for ≥30 sec.
- 7.8 Carefully remove and discard the ethanol.
- 7.9 Keeping the plate/tube(s) on the magnet, add 200 µL of 80% ethanol.
- 7.10 Incubate the plate/tube(s) on the magnet at room temperature for ≥30 sec.
- 7.11 Carefully remove and discard the ethanol. Try to remove all residual ethanol without disturbing the beads.
- 7.12 Dry the beads at room temperature for 3 – 5 min, or until all of the ethanol has evaporated. **Caution: over-drying the beads may result in reduced yield.**
- 7.13 Remove the plate/tube(s) from the magnet.
- 7.14 Thoroughly resuspend the beads in an appropriate volume of elution buffer (10 mM Tris-HCl, pH 8.0 – 8.5), and incubate the plate/tube(s) at room temperature for 2 min to elute DNA off the beads. Recommended volumes are as follows:
- If proceeding to **2nd Post-ligation Cleanup** (step 8), resuspend the beads in 50 µL.
 - If proceeding to **Double-sided Size Selection** (step 9), resuspend the beads in 100 µL, and omit the second post-ligation cleanup described below.
 - For a **safe stopping point**, resuspend the beads in either 50 µL or 100 µL (as required), and store at 2°C to 8°C for ≤24 hrs.

8. 2nd Post-ligation Cleanup

- 8.1 In the same plate/tube(s), perform a second 1X bead-based cleanup by combining the following:

| Component | Volume |
|--|---------------|
| Purified, adapter-ligated DNA with beads | 50 µL |
| PEG/NaCl Solution | 50 µL |
| Total volume: | 100 µL |

- 8.2 Mix thoroughly by vortexing and/or pipetting up and down multiple times.

- 8.3 Incubate the plate/tube(s) at room temperature for 5 – 15 min to bind DNA to the beads.
- 8.4 Place the plate/tube(s) on a magnet to capture the beads. Incubate until the liquid is clear.
- 8.5 Carefully remove and discard the supernatant.
- 8.6 Keeping the plate/tube(s) on the magnet, add 200 µL of 80% ethanol.
- 8.7 Incubate the plate/tube(s) on the magnet at room temperature for ≥30 sec.
- 8.8 Carefully remove and discard the ethanol.
- 8.9 Keeping the plate/tube(s) on the magnet, add 200 µL of 80% ethanol.
- 8.10 Incubate the plate/tube(s) on the magnet at room temperature for ≥30 sec.
- 8.11 Carefully remove and discard the ethanol. Try to remove all residual ethanol without disturbing the beads.
- 8.12 Dry the beads at room temperature for 3 – 5 min, or until all of the ethanol has evaporated. **Caution: over-drying the beads may result in reduced yield.**
- 8.13 Remove the plate/tube(s) from the magnet.
- 8.14 Thoroughly resuspend the beads in 25 µL of elution buffer (10 mM Tris-HCl, pH 8.0 – 8.5). Consult **Important Parameters: Post-ligation Processing** (p. 5) for more information on elution volumes.
- 8.15 Incubate the plate/tube(s) at room temperature for 2 min to elute DNA off the beads.
- 8.16 Place the plate/tube(s) on a magnet to capture the beads. Incubate until the liquid is clear.
- 8.17 Transfer the clear supernatant to a new plate/tube(s) and proceed with **Library Amplification** (step 10), QC, and/or sequencing, as appropriate.

9. Double-sided Size Selection (250 – 450 bp)

The double-sided size selection procedure described here is designed for selection of adapter-ligated fragments approximately 250 – 450 bp in length. Please consult the **KAPA NGS Library Preparation Technical Guide** or contact Technical Support at sequencing.roche.com/support if you wish to select a different range of fragment lengths.

- 9.1 In the same plate/tube(s) used for the first post-ligation cleanup, perform the first size cut (0.6X) by combining the following:

| Component | Volume |
|--|---------------|
| Purified, adapter-ligated DNA with beads | 100 µL |
| PEG/NaCl Solution | 60 µL |
| Total volume: | 160 µL |

- 9.2 Mix thoroughly by vortexing and/or pipetting up and down multiple times.
- 9.3 Incubate the plate/tube(s) at room temperature for 5 – 15 min to bind library fragments larger than ~450 bp to the beads.
- 9.4 Place the plate/tube(s) on a magnet to capture the beads. Incubate until the liquid is clear.
- 9.5 Carefully transfer 155 µL of supernatant containing library fragments smaller than ~450 bp to a new plate/tube(s). **It is critical that no beads are transferred with the supernatant.**
- 9.6 Discard the plate/tube(s) with beads, to which library fragments larger than ~450 bp are bound.
- 9.7 Perform the second size cut (0.8X) by combining the following:

| Component | Volume |
|----------------------------|---------------|
| Supernatant from first cut | 155 µL |
| KAPA Pure Beads | 20 µL |
| Total volume: | 175 µL |

- 9.8 Mix thoroughly by vortexing and/or pipetting up and down multiple times.
- 9.9 Incubate the plate/tube(s) at room temperature for 5 – 15 min to bind library fragments larger than ~250 bp to the beads.
- 9.10 Place the plate/tube(s) on a magnet to capture the beads. Incubate until the liquid is clear.
- 9.11 Carefully remove and discard the supernatant, which contains library fragments smaller than ~250 bp.
- 9.12 Keeping the plate/tube(s) on the magnet, add 200 µL of 80% ethanol.
- 9.13 Incubate the plate/tube(s) on the magnet at room temperature for ≥30 sec.
- 9.14 Carefully remove and discard the ethanol.
- 9.15 Keeping the plate/tube(s) on the magnet, add 200 µL of 80% ethanol.
- 9.16 Incubate the plate/tube(s) on the magnet at room temperature for ≥30 sec.
- 9.17 Carefully remove and discard the ethanol. Try to remove all residual ethanol without disturbing the beads.
- 9.18 Dry the beads at room temperature for 3 – 5 min, or until all of the ethanol has evaporated. **Caution: over-drying the beads may result in reduced yield.**
- 9.19 Remove the plate/tube(s) from the magnet.
- 9.20 Thoroughly resuspend the beads in 25 µL of elution buffer (10 mM Tris-HCl, pH 8.0 – 8.5). Consult **Important Parameters: Post-ligation Processing** (p. 5) for more information on elution volumes.

- 9.21 Incubate the plate/tube(s) at room temperature for 2 min to elute DNA off the beads.
- 9.22 Place the plate/tube(s) on a magnet to capture the beads. Incubate until the liquid is clear.
- 9.23 Transfer the clear supernatant containing size-selected DNA to a new plate/tube(s) and proceed with **Library Amplification** (step 10), QC, and/or sequencing, as appropriate.

10. Library Amplification

Note: please refer to **Important Parameters: Library Amplification** (p. 6) and the **KAPA NGS Technical Guide** for more information on optimizing library amplification.

- 10.1 Assemble each library amplification reaction as follows:

| Component | Volume |
|---|--------------|
| KAPA HiFi HotStart ReadyMix (2X) | 25 µL |
| Library Amplification Primer Mix (10X)* | 5 µL |
| Adapter-ligated library DNA | 20 µL |
| Total volume: | 50 µL |

*Or another, suitable 10X library amplification primer mix. The recommended final concentration of each primer in the library amplification reaction is 0.5 – 2 µM. Also refer to **Important Parameters: Library Amplification** (p. 6).

- 10.2 Mix thoroughly and centrifuge briefly.
- 10.3 Amplify using the following cycling protocol:

| Step | Temp. | Duration | Cycles |
|----------------------|-------|----------|---|
| Initial denaturation | 98°C | 45 sec | 1 |
| Denaturation | 98°C | 15 sec | Minimum required for optimal amplification (Table 3 or 4) |
| Annealing* | 60°C | 30 sec | |
| Extension | 72°C | 30 sec | |
| Final extension | 72°C | 1 min | 1 |
| HOLD | 4°C | ∞ | 1 |

*Optimization of the annealing temperature may be required for non-standard (i.e., other than Illumina TruSeq) adapter/primer combinations.

- 10.4 Proceed directly to **Library Amplification Cleanup** (step 11).

11. Library Amplification Cleanup

- 11.1 In the library amplification plate/tube(s), perform a 1X bead-based cleanup by combining the following:

| Component | Volume |
|--|---------------|
| Library amplification reaction product | 50 µL |
| KAPA Pure Beads | 50 µL |
| Total volume: | 100 µL |

- 11.2 Mix thoroughly by vortexing and/or pipetting up and down multiple times.
- 11.3 Incubate the plate/tube(s) at room temperature for 5 – 15 min to bind DNA to the beads.
- 11.4 Place the plate/tube(s) on a magnet to capture the beads. Incubate until the liquid is clear.
- 11.5 Carefully remove and discard the supernatant.
- 11.6 Keeping the plate/tube(s) on the magnet, add 200 µL of 80% ethanol.
- 11.7 Incubate the plate/tube(s) on the magnet at room temperature for ≥30 sec.
- 11.8 Carefully remove and discard the ethanol.
- 11.9 Keeping the plate/tube(s) on the magnet, add 200 µL of 80% ethanol.
- 11.10 Incubate the plate/tube(s) on the magnet at room temperature for ≥30 sec.
- 11.11 Carefully remove and discard the ethanol. Try to remove all residual ethanol without disturbing the beads.
- 11.12 Dry the beads at room temperature for 3 – 5 min, or until all of the ethanol has evaporated. **Caution: over-drying the beads may result in reduced yield.**
- 11.13 Remove the plate/tube(s) from the magnet.
- 11.14 Thoroughly resuspend the beads in an appropriate volume of elution buffer (10 mM Tris-HCl, pH 8.0 – 8.5) or PCR-grade water. **Always use PCR-grade water if proceeding to target capture.**
- 11.15 Incubate the plate/tube(s) at room temperature for 2 min to elute DNA off the beads.
- 11.16 Place the plate/tube(s) on a magnet to capture the beads. Incubate until the liquid is clear.
- 11.17 Transfer the clear supernatant to a new plate/tube(s) and proceed with library QC, target enrichment, or sequencing, as appropriate. Store purified, amplified libraries at 2°C to 8°C for 1 – 2 weeks, or at -15°C to -25°C.

Appendix: Library Construction Guidelines for the Roche SeqCap EZ Target Capture System

This appendix provides guidelines for the preparation of libraries for targeted sequencing (capture) using the Roche SeqCap EZ system, and specific protocols for pre- and post-capture ligation-mediated (LM)-PCR. Please refer to the most recent version of the **Roche SeqCap EZ Library SR User's Guide** for detailed instructions relating to hybridization of the amplified sample library to the SeqCap EZ library (capture), and washing and recovery of the captured DNA sample.

A1. Library Construction

Prepare libraries from fragmented, human genomic DNA according to the protocol (pp. 10 – 16) of this document. Specific recommendations are as follows:

- A1.1 For optimal results with 2 x 100 bp paired-end sequencing, input DNA should be fragmented to an average length in the range of 180 – 220 bp. For 2 x 250 bp paired-end sequencing, a slightly longer fragment length may be preferred. The size distribution of the fragmented DNA should be confirmed electrophoretically prior to library construction, using an LabChip GX, GXII, or GX Touch (PerkinElmer), Bioanalyzer or TapeStation (Agilent Technologies), Fragment Analyzer (Advanced Analytical) or similar instrument.
- A1.2 The recommended input into fragmentation for the standard SeqCap EZ protocol is 100 ng, but higher or lower inputs can be accommodated. For information regarding exceptions to the standard protocol, please contact Technical Support at sequencing.roche.com/support.
- A1.3 SeqCap Index Adapters from Roche are recommended for adapter ligation.
- The standard protocol (100 ng input) recommends 3 µL of SeqCap Adapter (of the appropriate index; reconstituted as described in the **SeqCap EZ Library SR User's Guide**) per 50 µL ligation reaction.
 - To accommodate this, the adapter ligation master mix (Table 7A, p. 11) must be modified to contain 32 µL PCR-grade water per 50 µL reaction (instead of 30 µL). The compositions of the modified adapter ligation master mix and adapter ligation reaction are outlined in the following tables:

| Adapter ligation master mix | Volume |
|-----------------------------|--------------|
| PCR-grade water | 32 µL |
| Ligation Buffer (5X) | 10 µL |
| DNA Ligase | 5 µL |
| Total volume: | 47 µL |

| Adapter ligation reaction | Volume |
|-----------------------------|--------------|
| Beads with A-tailed DNA | — |
| SeqCap Index Adapter | 3 µL |
| Adapter ligation master mix | 47 µL |
| Total volume: | 50 µL |

- A1.4 If you are using adapters from a different source, or an input other than 100 ng, adhere to the guidelines provided in **Important Parameters: Adapter Design and Concentration** (p. 5). When using Illumina TruSeq adapters from an Illumina TruSeq Library Preparation Kit v2:
- For 1 µg input, dilute the adapter 1:5 in 10 mM Tris-HCl (pH 8.0 – 8.5) and use 5 µL per 50 µL ligation reaction.
 - For 100 ng input, dilute the adapter 1:50 in 10 mM Tris-HCl (pH 8.0 – 8.5) and use 5 µL per 50 µL ligation reaction.
- A1.5 After adapter ligation, a double-sided size selection is recommended. This is achieved by performing **1st Post-ligation Cleanup** (step 7), eluting the DNA in 100 µL elution buffer (10 mM Tris-HCl, pH 8.0 – 8.5), and proceeding to **Double-sided Size Selection** (step 9). The double-sided size selection is designed to eliminate adapter-ligated library fragments >450 bp and <250 bp.
- Note:** size selection typically results in a significant loss of adapter-ligated material. If there is no need to eliminate large fragments (>450 bp) from the adapter-ligated library, two consecutive 1X bead-based cleanups are recommended to remove unused adapter and adapter-dimer. This strategy results in a simpler workflow with less loss of material prior to pre-capture amplification, and should be considered in cases where the quantity and/or quality of input DNA is limiting.
- A1.6 Irrespective of whether the no size selection (two consecutive 1X bead-based cleanups) or double-sided size selection strategy is followed, the final, dried beads with cleaned/size-selected, adapter-ligated library must be thoroughly resuspended in 25 µL of elution buffer. Proceed directly to **Pre-capture LM-PCR** (step A2).

A2. Pre-capture LM-PCR

Note: SeqCap Adapter Kits A and B contain library amplification primers for pre- and post-capture LM-PCR. Library Amplification Primer Mix (10X) included in the KAPA HTP Library Preparation Kit is compatible with SeqCap Index Adapters, and may be used instead of the SeqCap primers in both the pre- and post-capture LM-PCR for optimal amplification efficiency.

- A2.1 Assemble each pre-capture LM-PCR in a PCR tube or wells of a PCR plate as follows:

| Component | Volume |
|--|--------------|
| KAPA HiFi HotStart ReadyMix (2X) | 25 µL |
| Pre-LM-PCR Oligos 1 & 2* | 5 µL |
| Purified (size-selected) adapter-ligated library DNA** | 20 µL |
| Total volume: | 50 µL |

*Prepared as described in the SeqCap EZ Library SR User's Guide.

**Or PCR-grade water for negative control.

- A2.2 Perform the pre-capture LM-PCR with the following thermocycling parameters:

| Step | Temp. | Duration | Cycles |
|----------------------|-------|----------|--------|
| Initial denaturation | 98°C | 45 sec | 1 |
| Denaturation | 98°C | 15 sec | 9 |
| Annealing* | 60°C | 30 sec | |
| Extension | 72°C | 30 sec | |
| Final extension | 72°C | 1 min | 1 |
| HOLD | 4°C | ∞ | 1 |

*8 cycles are recommended for 100 ng input DNA. For lower inputs, or FFPE DNA, additional cycles may be needed to produce sufficient material for capture. Please refer to Tables 3 and 4 in Important Parameters: Library Amplification for guidelines.

- A2.3 Store the plate/tube(s) at 2°C to 8°C for ≤72 hrs or proceed directly to Cleanup and QC of the Pre-capture LM-PCR Amplified Sample Library (step A3).

A3. Cleanup and QC of the Pre-capture LM-PCR Amplified Sample Library

- A3.1 Perform the pre-capture LM-PCR cleanup (1X) as described in Library Amplification Cleanup (step 11, p. 16). *Pre-capture libraries must be eluted in PCR-grade water, not elution buffer.*
- A3.2 Quantify the amplified library with the KAPA Library Quantification Kit or a NanoDrop spectrophotometer, and analyze 1 µL of the sample using an Agilent 2100 Bioanalyzer DNA 1000 Kit. For optimal results, the library fragment length distribution should be 150 – 500 bp.

For single captures (one DNA sample library per capture), the yield of each amplified library should be >1 µg. For multiplexed capture (>1 DNA sample library per capture), a total of 1 µg of the pool of DNA sample libraries is required. Depending on QC and/or archiving requirements, <1 µg of each individual library may therefore be needed, and the number of pre-capture amplification cycles may be adjusted accordingly.

A4. Hybridization of the Amplified Sample Library to the SeqCap EZ Library

Set up hybridization reactions according to instructions outlined in the SeqCap EZ Library SR User's Guide.

A5. Washing and Recovery of the Captured DNA Sample

Follow the instructions outlined in the SeqCap EZ Library SR User's Guide for binding of the captured DNA sample to streptavidin beads and washing of the bead-bound DNA.

A6. Post-capture LM-PCR

Two 50 µL post-capture LM-PCRs—each containing 20 µL of washed and resuspended streptavidin (capture) beads—are performed for each library.

The composition of each post-capture LM-PCR is given in the table below. If convenient, double the amount of each component may be premixed (for a total of 60 µL of post-capture LM-PCR mix per library) and split equally between two PCR tubes or wells of a PCR plate.

- A6.1 Assemble two post-capture LM-PCRs for each captured library in PCR tubes or wells of a PCR plate. Each reaction consists of:

| Component | Volume |
|----------------------------------|--------------|
| KAPA HiFi HotStart ReadyMix (2X) | 25 µL |
| Pre-LM-PCR Oligos 1 & 2* | 5 µL |
| Total volume: | 30 µL |

*Prepared as described in the SeqCap EZ Library SR User's Guide. May be replaced with Library Amplification Primer Mix (10X).

- A6.2 Vortex the streptavidin bead-bound captured Multiplex DNA Sample Library Pool to ensure that the solution is homogeneous before proceeding to the next step.
- A6.3 Transfer 20 µL of streptavidin bead-bound capture DNA Sample Library (or PCR-grade water for negative controls) to each of the two wells/tubes containing post-capture LM-PCR mix. Mix thoroughly by pipetting up and down. Store the remaining bead-bound captured DNA Sample Library at -15°C to -25°C.

- A6.4 Perform the post-capture LM-PCR with the following thermocycling parameters outlined below:

| Step | Temp. | Duration | Cycles |
|----------------------|-------|----------|--------|
| Initial denaturation | 98°C | 45 sec | 1 |
| Denaturation | 98°C | 15 sec | 14* |
| Annealing | 60°C | 30 sec | |
| Extension | 72°C | 30 sec | |
| Final extension | 72°C | 1 min | 1 |
| HOLD | 4°C | ∞ | 1 |

*The number of post-capture amplification cycles may be reduced if standard parameters produce library yields that far exceed what is needed for QC, sequencing and archiving.

- A6.5 Store the plate/tube(s) for ≤72 hrs at 2°C to 8°C, or proceed directly to **Cleanup and QC of the Post-capture LM-PCR Amplified Sample Library** (step A7).

A7. Cleanup and QC of the Post-capture LM-PCR Amplified Sample Library

- A7.1 Perform the post-capture LM-PCR cleanup (1X) as described in **Library Amplification Cleanup** (step 11, p. 16). The standard protocol recommends pooling the two post-capture LM-PCRs into a 1.5 mL tube, for a single cleanup. It also indicates that post-capture libraries should be eluted in PCR-grade water, but elution buffer (10 mM Tris-HCl, pH 8.0 – 8.5) should be considered for longer-term stability.
- A7.2 Quantify the final, amplified library with the KAPA Library Quantification Kit, or with a NanoDrop spectrophotometer, and analyze 1 µL of the sample using an Agilent 2100 Bioanalyzer DNA 1000 Kit. The yield of final, amplified library should be >500 ng, and the library fragment length distribution should be 150 bp – 500 bp.

A8. Determine the Sample Enrichment using qPCR

- A8.1 Follow the instructions outlined in the **SeqCap EZ SR User Guide** for estimating the relative fold enrichment achieved for the amplified, captured DNA sample.

Restrictions and Liabilities

This technical data sheet is provided “as is” and Kapa Biosystems assumes no responsibility for any typographical, technical, or other inaccuracies. The document is subject to change, without notice, in future editions.

To the maximum extent permitted by applicable law, Kapa Biosystems disclaims all warranties, either express or implied, with regard to this technical data sheet and any information contained herein, including but not limited to the implied warranties of merchantability and fitness for a particular purpose. Kapa Biosystems shall not be liable for errors or for incidental or consequential damages in connection with the furnishing, use, or performance of this document or of any information contained herein.

This document might contain references to third party sources of information, hardware or software, products, or services and/or third party web sites (collectively the “Third-Party Information”). Kapa Biosystems does not control, and is not responsible for, any Third-Party Information. The inclusion of Third-Party Information in this document does not imply endorsement by Kapa Biosystems of the Third-Party Information or the third party in any way.

Kapa Biosystems is not responsible nor will be liable in any way for your use of any software or equipment that is not supplied by Kapa Biosystems in connection with your use of Kapa Biosystems products.

Kapa Biosystems does not in any way guarantee or represent that you will obtain satisfactory results from using Kapa Biosystems products as described herein. The only warranties provided to you are included in the Limited Warranty enclosed with this document. You assume all risk in connection with your use of Kapa Biosystems products.

Note to Purchaser: Limited Product Warranty

Any product that does not meet the performance standards stated in the product specification sheet will be replaced at no charge. This warranty limits our liability to the replacement of the product. No other warranties of any kind, express or implied, including without limitation, implied warranties of merchantability or fitness for a particular purpose, are provided by Kapa Biosystems. Kapa Biosystems shall have no liability for any direct, indirect, consequential or incidental damages arising out of the use, the results of use or the inability to use any product.

Note to Purchaser: Limited License

KAPA HTP Library Preparation Kits are developed, designed and sold exclusively for research purposes and *in vitro* use. Neither the product, nor any individual component, has been tested for use in diagnostics or for drug development, nor is it suitable for administration to humans or animals. Please refer to the MSDS, which is available on request.

Certain applications of this product are covered by patents issued to parties other than Kapa Biosystems and applicable in certain countries. Purchase of this product does not include a license to perform any such applications. Users of this product may therefore be required to obtain a patent license depending upon the particular application and country in which the product is used.

Licensed under U.S. Patent nos. 5,338,671 and 5,587,287 and corresponding patents in other countries.



Manufacturing, R&D
Cape Town, South Africa
Tel: +27.21.448.8200
Fax: +27.21.448.6503

Technical Support
sequencing.roche.com/support