

✓ ADVANTAGES

- Isolation without xylene
- Without the use of organic compounds
- High quality isolated DNA
- All solutions are ready to use (no ethanol addition)

✓ DESCRIPTION

EliGene® FFPE Tissue DNA Isolation Kit provides safe and reliable isolation of genomic DNA from formalin-fixed paraffin embedded (FFPE) tissue. The tissue is released by complete dissolution of the wax by buffer without the use of xylene. The DNA purification is based on spin-column technology. High quality DNA is suitable for downstream applications such as End-Point PCR, Real-Time PCR, SNP analysis, sequencing and others.

✓ APPLICATIONS

Isolated DNA from intestine samples was measured spectrophotometrically. In the commercial kit Q, the maximum of absorption spectrum is found not only at a wavelength of 260 nm, indicating the presence of DNA but also in the 220 nm region indicating the contamination with proteins and other substances. The **EliGene® FFPE Tissue DNA Isolation Kit** has maximum wavelength at 260 nm, indicating the purity of the extracted DNA.

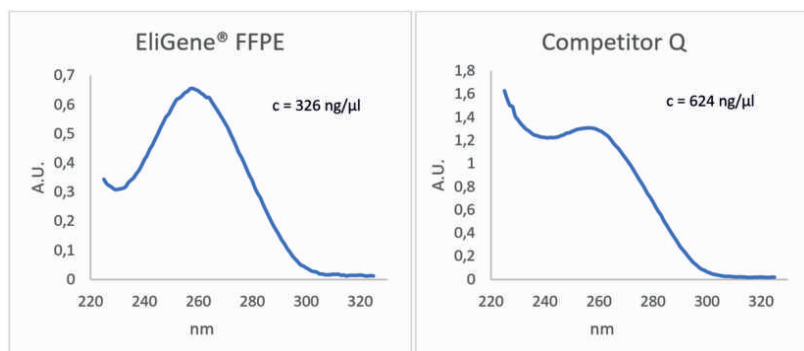
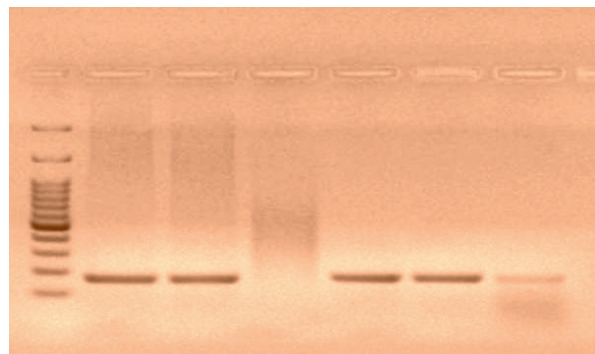


Figure: Amplification results with End-Point PCR. Comparison of the commercial kit Q and EliGene. (from the left: ladder, Q - uterus, intestine, older liver sample, EliGene - uterus, intestine, older liver sample)



CONTACT US

ELISABETH PHARMACON
ROKYCANOVA 4437/5, BRNO-ZIDENICE 615 00
CZECH REPUBLIC | +420 542 213 851
orders@elisabeth.cz | www.elisabeth.cz

ELISABETH PHARMACON GROUP